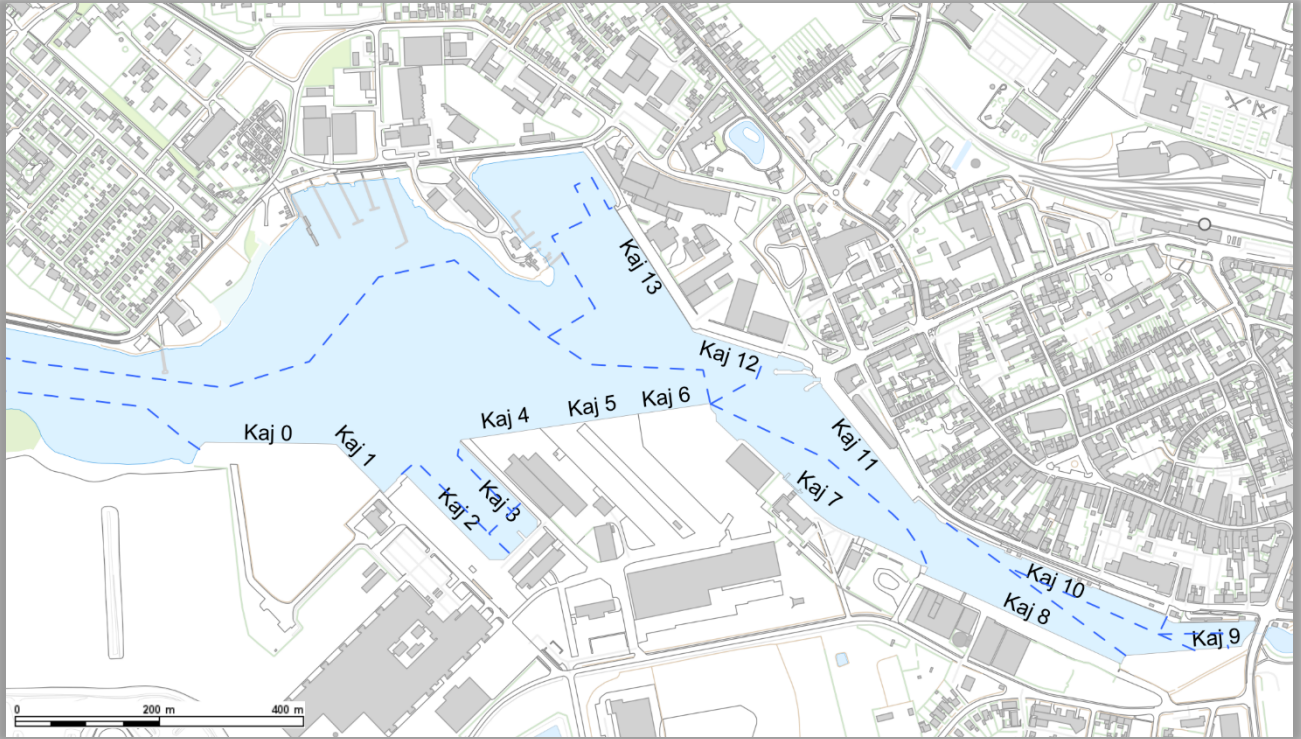


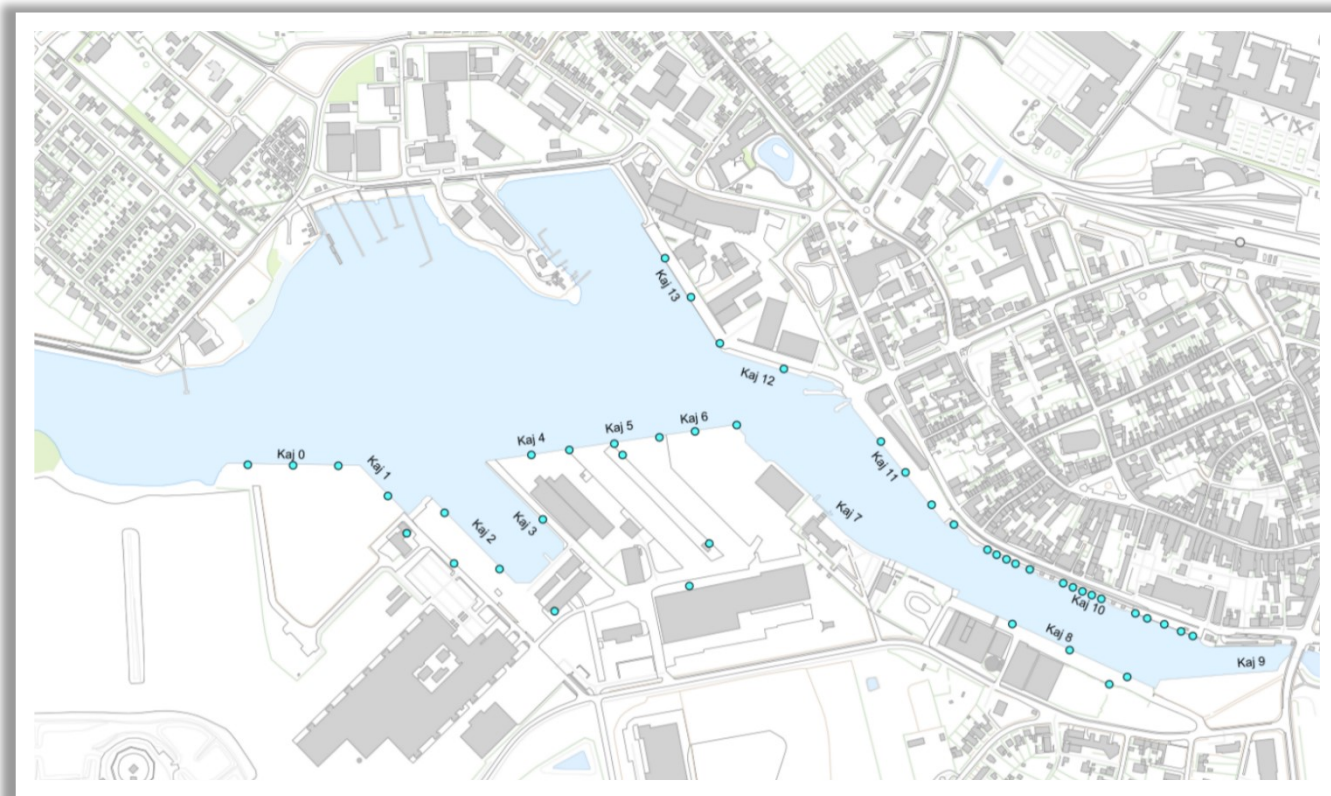
# Quay data Nakskov Havn



Berth Number	Berth length (m)	Water depth (m)	Berth width (m)	Berth area in m <sup>2</sup>	Surface	Max Load (tonnes/m <sup>2</sup> )	IMO Number	Remarks
0	115	8,5	30		Coloc	20		Heavy lift quay
0	2 x 30	8,5	30	40.000	Gravel	5		Adjacent to heavylift area
1	100	8,5	20		Coloc/Gravel	2	DKNAK0034	Good Storage area
ro-ro berth	100	8,5	40	7.370	Coloc	2		Mooring at Berth 1 - Landing area berth 2
2	170	6,3	40		Coloc	2		Good Storage area
3	150	6,3	15	2.250	Asphalt	2		Bulk
4	100	8,5	35	1.800	Concrete/Asphalt	2	DKNAK0001	Reinforced heavy duty concrete
5	150	8,5	220	40.000	Coloc	5		100 ton crane
6	100	8,5	220		Coloc/gravel	20		Heavy lift quay
8	230	6,3	20	6.000	Asphalt	2	DKNAK0007	Bulk and molasses
9	150	2 to 5	8	-	Gravel	-	-	Recreation
10	170	3,5	3	-	-	-	-	Yachts
11	170	6,3	40	6.800	Asphalt	2	-	Reserve Berth promenade
12	120	7,5	40	4.800	Asphalt	2	DKNAK0003	Bulk
13	200	7,5	30	6.000	Asphalt	2		Bulk

## Nakskov Havn

### Power and freshwater



Berth Number	Power 124 Amp	Power 63 Amp	Power 32 Amp	Power 16 Amp	Fresh water Connections	Fresh water capacity t/hour	Remarks
0	3	3	3	6	3	5	isps
1	-	-	-	1	-	-	isps
2	3	3	3	6	3	5	isps
3	1	1	1	2	-	-	isps
4	-	1	1	1	2	5	isps
5	-	1	1	2	2	5	isps
6	-	3	3	6	3	5	isps
8	-	3	3	6	3	5	isps
9	-	-	-	-	-	-	Recreation
10	-	1	-	32	8	1	Yachts
11	-	-	3	3	3	3	isps
12	-	1	1	2	1	5	isps
13	-	3	3	6	3	5	isps